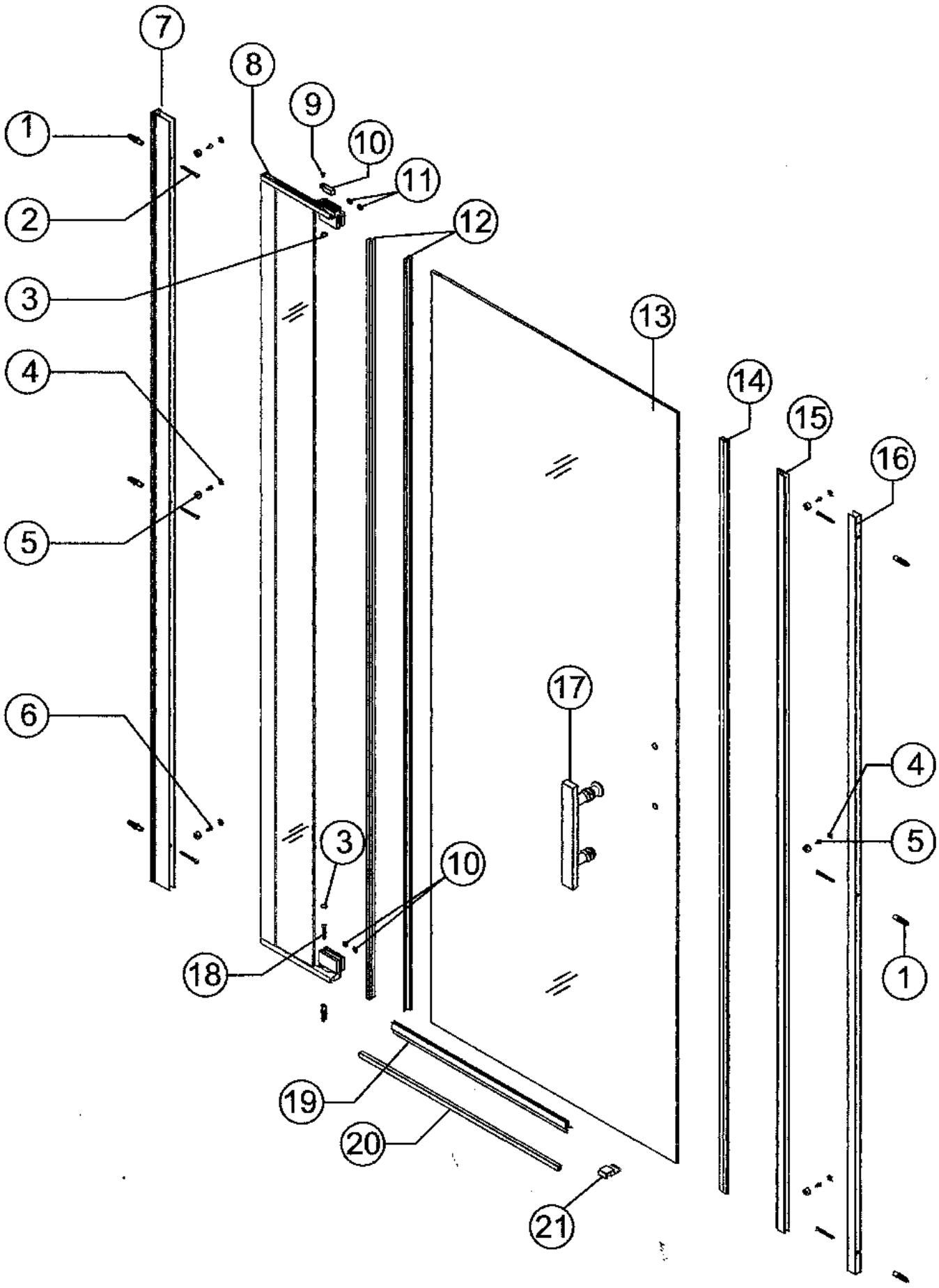


Custom Pivot Door Instruction Manual



















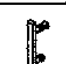





We recommend that safety glasses be worn during installation.



1

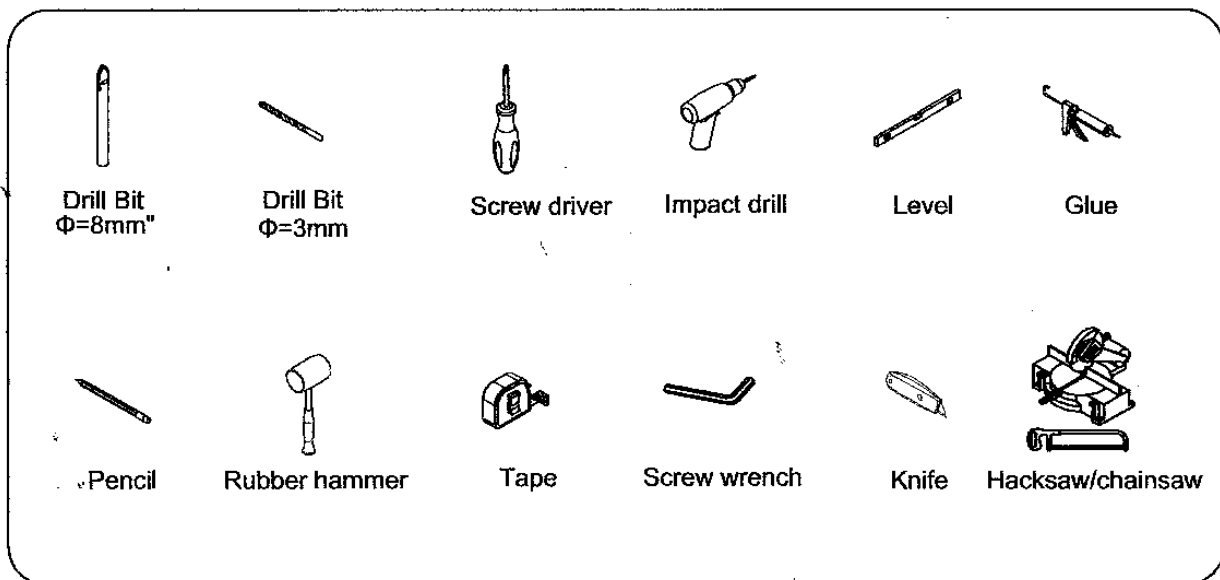
Accessory list

NO.	Diagram	Description	QTY
①		Wall plug	7+2
②		NO.8x1 3/4"	6+2
③		Cap A	2+1
④		Cap B	6+2
⑤		Washer	6+2
⑥		NO.8x3/8"	6+2
⑦		A0462 Frame	1
⑧		Fixed Panel	1
⑨		Screw m3x8	1
⑩		Cover to the top bar	1
⑪		Cover on the top & Bottom door hinge	4+1

NO.	Diagram	Description	QTY
⑫		S0024 Rubber seal	2
⑬		Door Panel	1
⑭		Magnet gasket	1
⑮		Magnet gasket with aluminum	1
⑯		Gasket	1
⑰		Handle	1
⑱		Screw NO.8x1"	1+1
⑲		SL00009 Rubber seal	1
⑳		A0463 Threshold	1
㉑		Bottom aluminum anchor	1
㉒		Allan Key	2

2

Installation tools

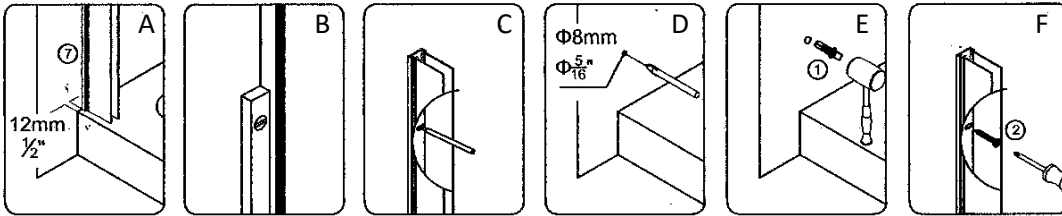
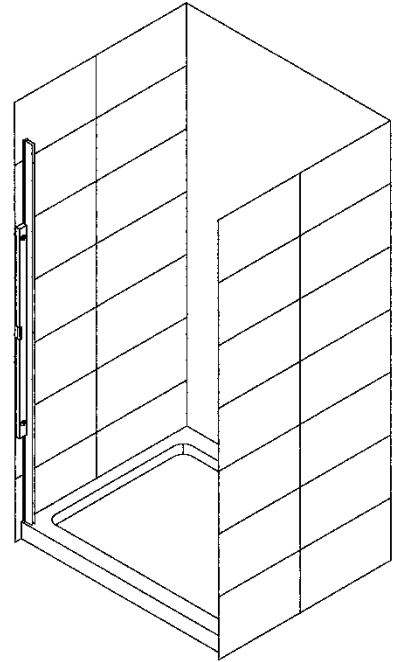


1. Install the base

- a. Install acrylic base, making sure to use a level. If you are installing the door on a tile base, tile and seal the grout before installing door

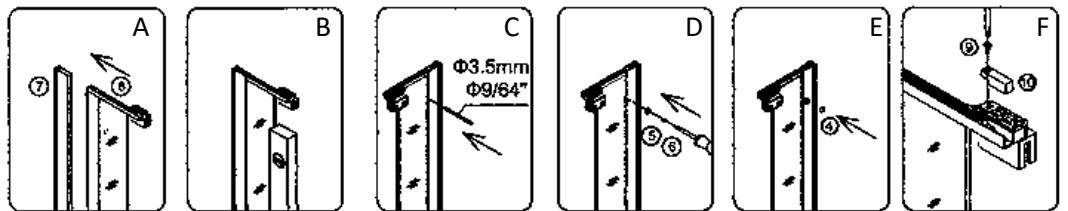
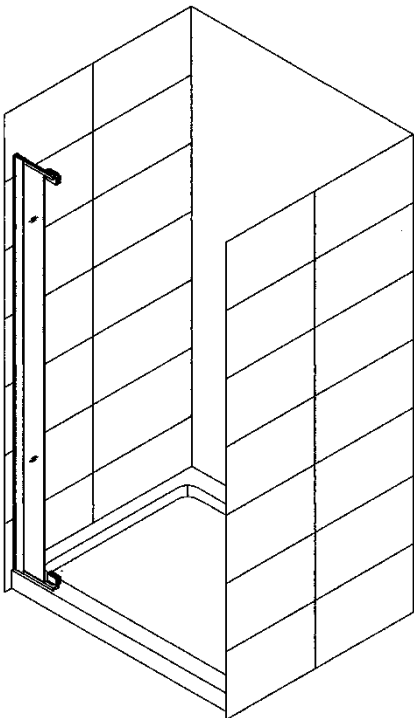
2. Install Fixed Panel

- a. Set frame (7) on wall temporarily 12 ½ mm from the edge of the base.
- b. Use the level to insure the frame (7) is perfectly vertical.
- c. Using a pencil, mark the locations of the future screws.
- d. Remove Frame (7) and pre-drill the holes.
- e. Insert wall plugs(1) into the holes
- f. Set frame (7) and secure with screws (2)



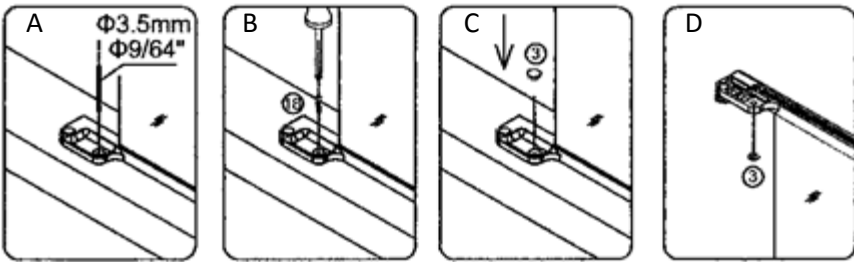
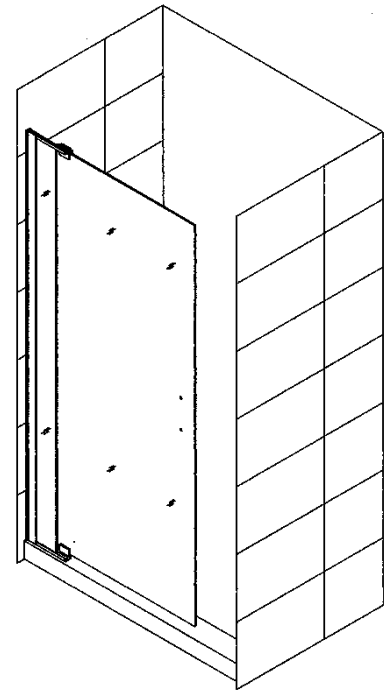
3. Install Fixed Panel

- a. Place fixed panel (8) inside the slot of the frame (7)
- b. With a level ensure that the fixed panel (8) is straight.
- c. Drill three holes in behind the frame(7) to secure the fixed panel (8)
- d. Secure with screws (6) and add washers (5)
- e. Add caps (4) to the end of the screws.
- f. Secure cover (10) to the top bar with a screw (9)



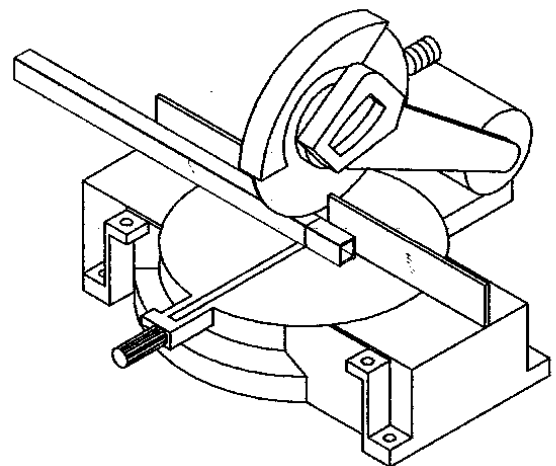
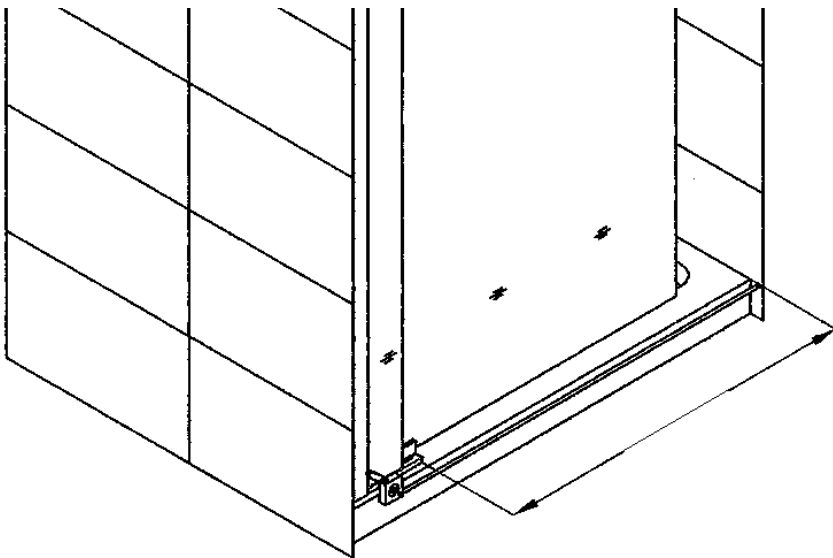
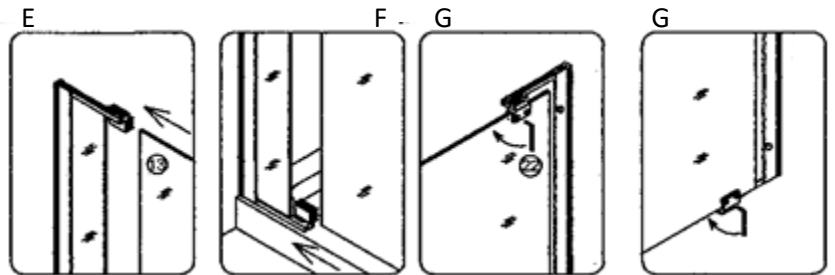
4. Install Door Panel

- Pre-drill through the acrylic base (or ceramic tile) using appropriate drill bit, where the fixed panel (8) meets the floor.
- Secure the fixed panel (8) with a screw (18)
- Cap the hole on the bottom with cap A (3)
- Cap the hole on the top with cap A (3)
- Insert door panel (13) into clamps at the top of the fixed panel (8)
- Then place the other end of the door panel (13) into the bottom clamp of the fixed panel.
- Using an Alan key tighten the top clamp and bottom clamp



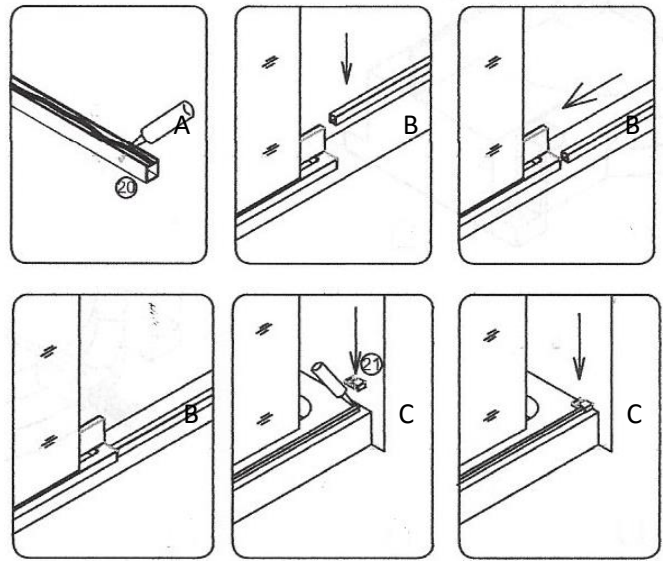
5. Prepare Threshold

- Measure the doorway opening using a measuring tape
- Cut the threshold (20) to fit using a hacksaw or a skill saw.



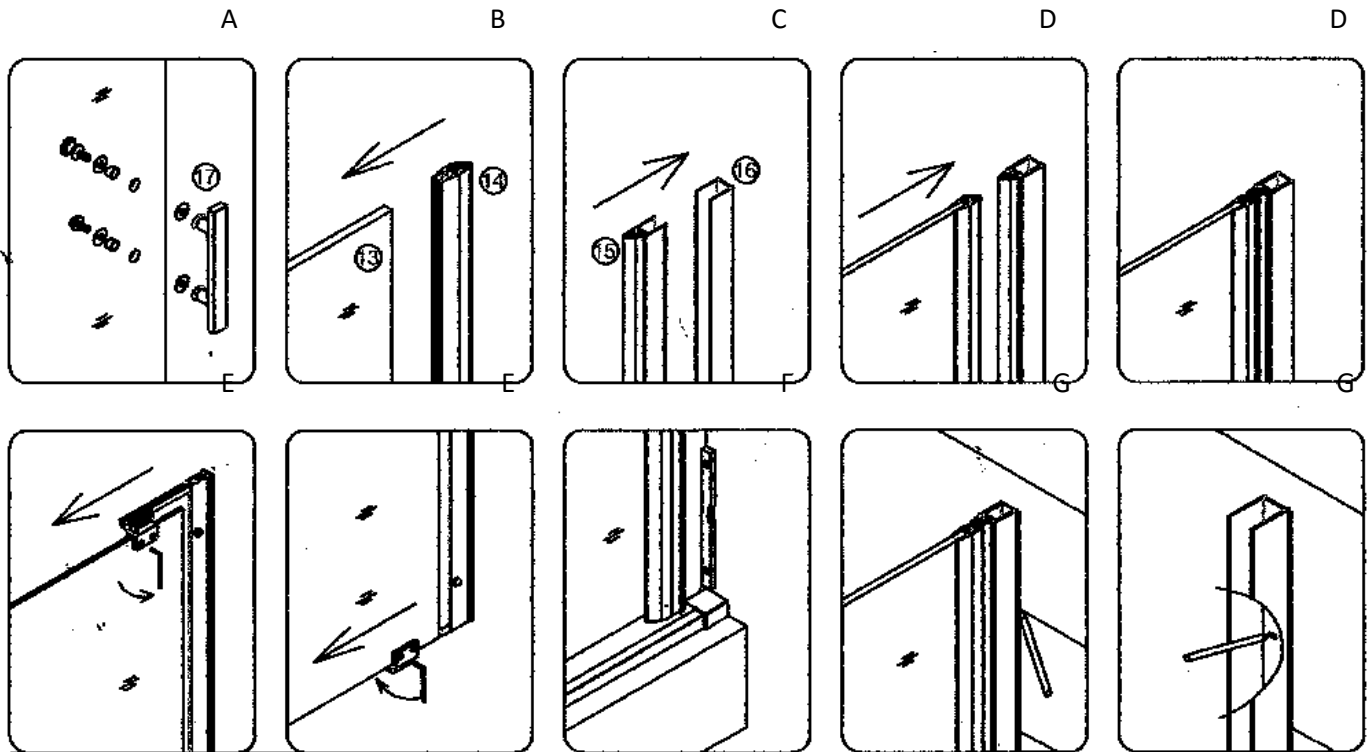
6. Install Threshold

- Apply silicone to the underside of the threshold (20).
- Insert threshold (20) into small hole in bottom of fixed panel (8)
- Add some silicone to the other side and secure bottom aluminium anchor (21)



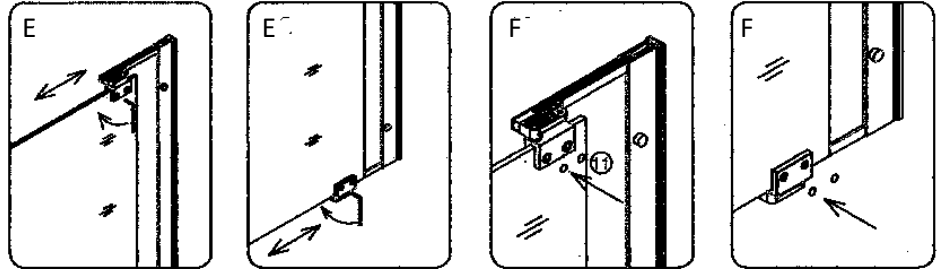
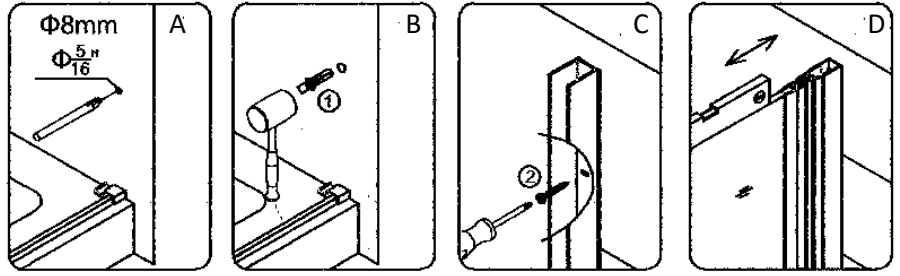
7. Install Handle & Prep Magnetic Seal

- Install Handle (17) as shown.
- Using mallet, install magnet gasket (14) to door panel (13).
- Install second magnet gasket (15) into aluminium frame (16)
- Set magnet gasket with aluminum frame onto wall and examine the gap between both magnets
- Using an Allan key (22) loosen clamps and adjust the door panel by sliding it towards the gap.
- Ensure the magnet gasket with aluminium is straight using a level.
- Mark the locations on the wall with a pencil where the screws will go.



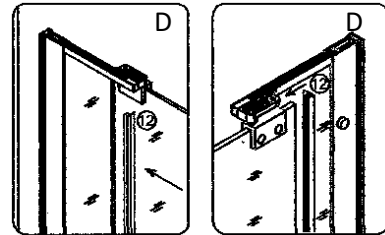
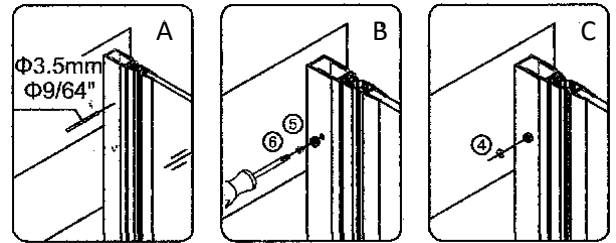
8. Install Magnetic Seal

- Pre-drill holes from previous pencil marks
- Insert wall plugs (1) into predrilled holes.
- Secure aluminium frame (16) to wall with screws (2).
- Use level to make sure the door panel is straight.
- If the two magnets do not meet and seal, readjust the fixed panel clamps (8) using an Allan key
- Replace Caps.



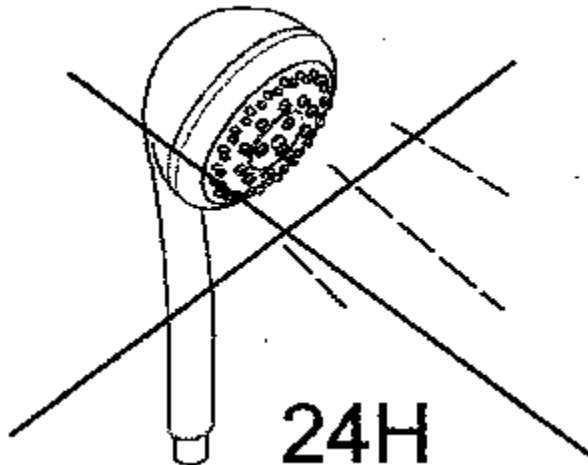
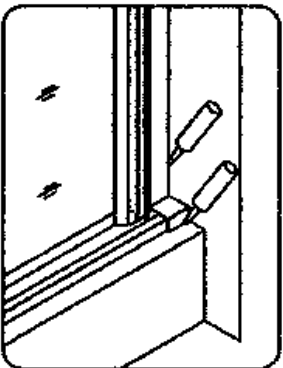
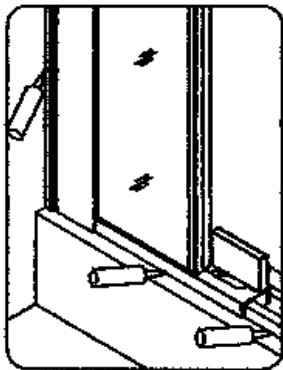
9. Install Gaskets

- Drill holes from behind in aluminum frame (15)
- Secure gasket with screws (5) and washers (6)
- Cap holes (4)
- Install plastic gaskets (16) with mallet



10. Calking

- Using clear silicone, run a bead along the on the outside of the shower.
- Let dry for 24 hours



edges